

MONTHLY MEMBERSHIP PROGRESS REPORT

District C 1

Results as of: 8/31/2024

GMT:

LOCATION ALBERTA

GMT CA

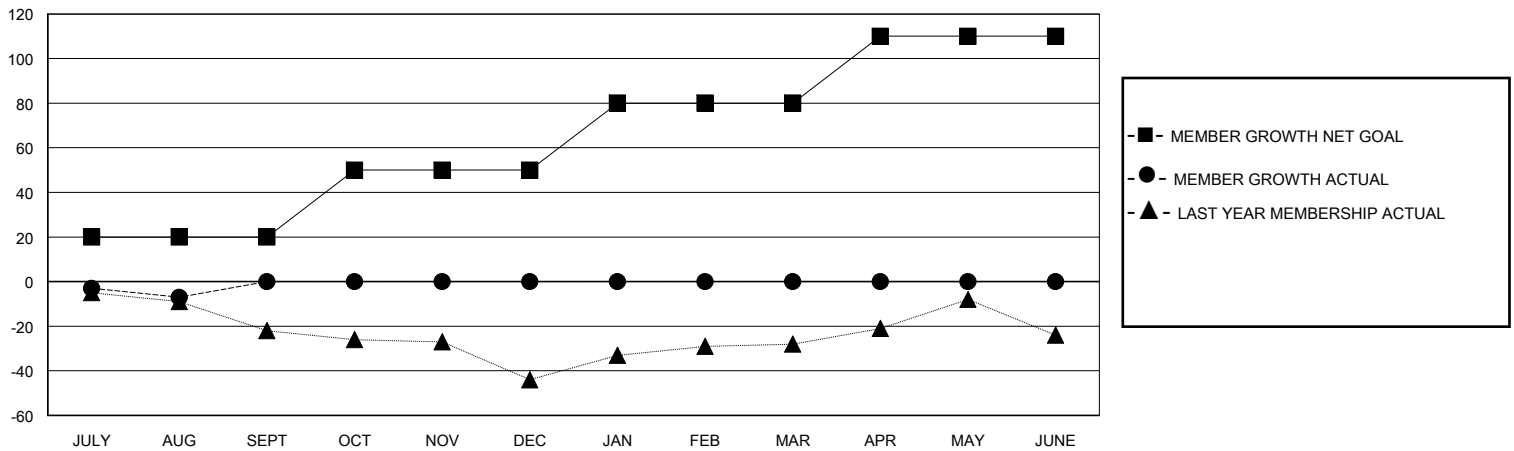
| Clubs | | | |
|-----------------------|---------------|-----------|---------------|
| RESULTS FOR 2024-2025 | | | |
| QUARTER | NEW CLUB GOAL | NEW CLUBS | DROPPED CLUBS |
| JULY/AUG/SEPT | 0 | 0 | 0 |
| OCT/NOV/DEC | 0 | 0 | 0 |
| JAN/FEB/MAR | 0 | 0 | 0 |
| APR/MAY/JUNE | 1 | 0 | 0 |

| Members | | | |
|-----------------------|------------------------|----------------------|--|
| RESULTS FOR 2024-2025 | | | |
| QUARTER | MEMBER GROWTH NET GOAL | MEMBER GROWTH ACTUAL | DROPPED MEMBERS ACTUAL (including transfers) |
| JULY/AUG/SEPT | 20 | 13 | 16 |
| OCT/NOV/DEC | 30 | 0 | 0 |
| JAN/FEB/MAR | 30 | 0 | 0 |
| APR/MAY/JUNE | 30 | 0 | 0 |

GOALS AND ACTUAL NEW CLUBS CUMULATIVE



GOALS AND ACTUAL MEMBERS CUMULATIVE



DROPPED CLUBS: 0

5 CLUBS OF 87 ADDED 1 OR MORE NEW MEMBERS

GENDER DISTRIBUTION

MALE 979 (61.46%)
FEMALE 614 (38.54%)

DROPPED MEMBERS

| | |
|----------------|-----------|
| DECEASED | 2 |
| CLUB CANCELLED | 0 |
| OTHER | 14 |
| TOTAL | 16 |

[CLICK HERE FOR CUMULATIVE MEMBERSHIP DATA](#)

| | |
|---------------------------------|-----|
| TOTAL FAMILY UNIT MEMBERS | 328 |
| FAMILY MEMBERS PAYING HALF DUES | 168 |